

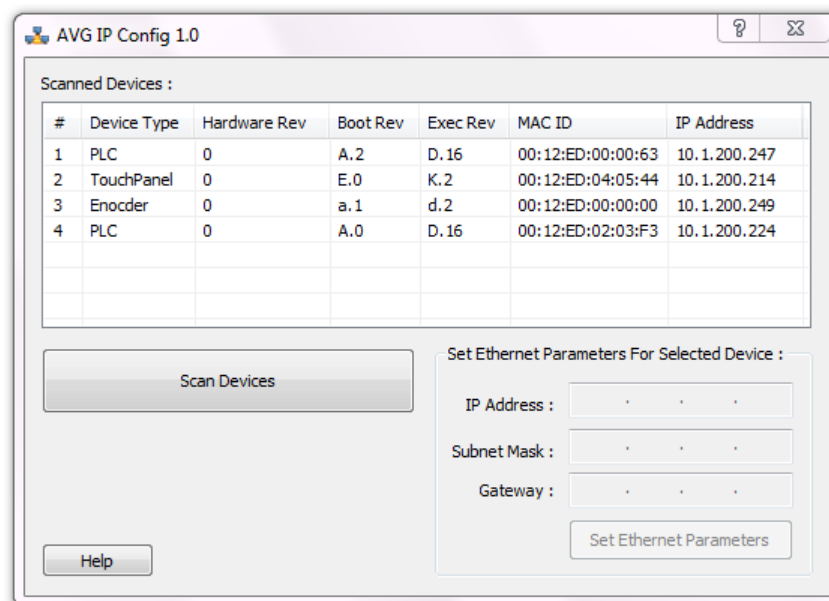


## AVG IP CONFIG

Many AVG products support Ethernet communications. Corresponding programming software and editors allow configuration of IP related parameters for the products typically through use of a serial cable.

AVG IPConfig, a free utility from AVG, offers an alternative for IP configuration for AVG products. This utility provides the following advantages:

- A common configuration utility for AVG products
- IP parameter editing over Ethernet – no serial connection required
- Automatic discovery of AVG devices connected to the local area network (LAN) even if a device's IP address is not on the same subnet



## SYSTEM REQUIREMENTS:

**Computer Operating System**

Windows XP or Windows 7

**AVG Products**

Product Type	Firmware Version
Touch Panels	K.2 or above
PLC	D.16.63 or above
Marquee	R or above
SmartEncoders	all versions



## INSTALLATION PROCESS:

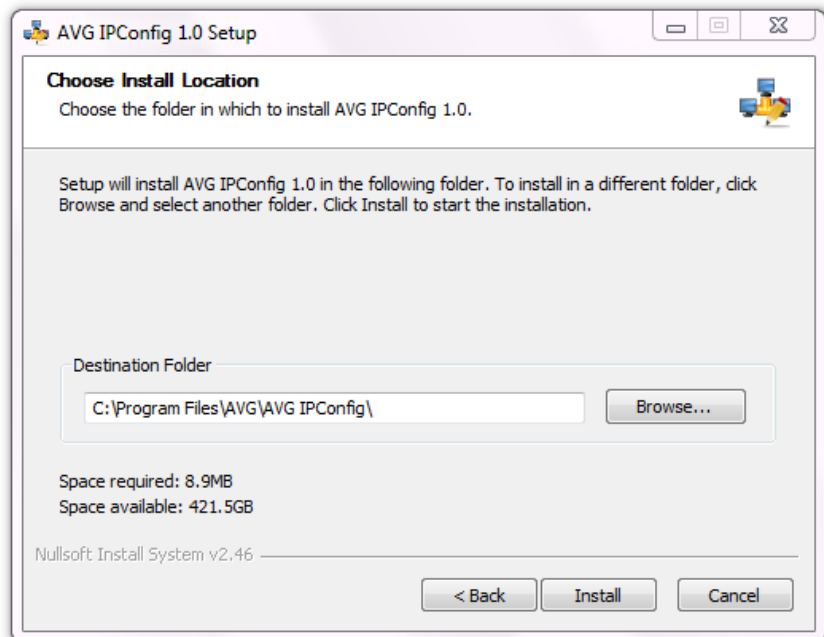
The AVG IPConfig utility is distributed as a single setup file, typically named: AVG IPConfig X.X (FULL) setup.exe where X.X is the version number.

To install the utility, run the setup file. After the download is complete, a dialogue box (shown right) will appear automatically. Click next to begin the installation process.



After agreeing to the Terms and Conditions, the setup guide will ask for a location to save the file.

Please enter (or accept the default) location where you would like the utility to be installed, and then click install. The installation will create an icon on your desktop as well as a menu item in your programs.

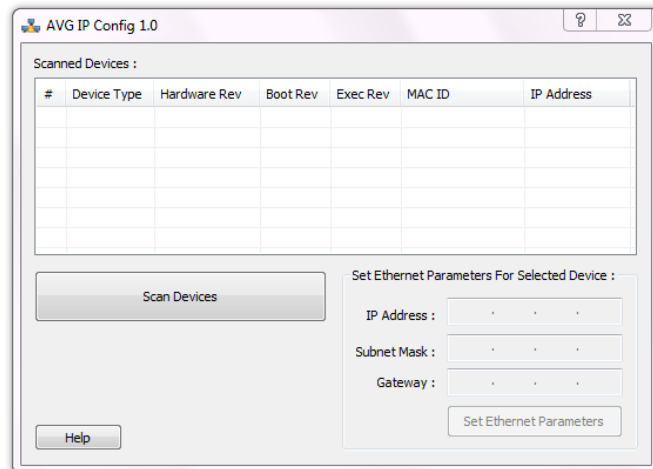




## EDITING IP ADDRESS INFORMATION:

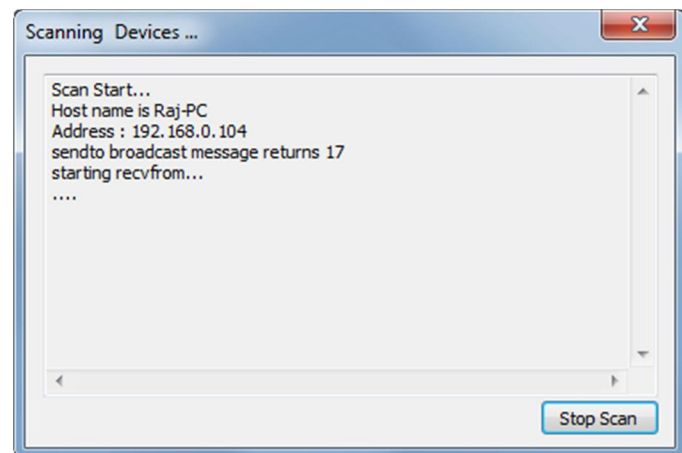
All Ethernet supporting AVG products are factory-programmed with an IP address. Once you receive a new unit, you may need to assign it a new IP address compatible with your LAN network.

To adjust the IP parameters using the IPConfig utility, click on its icon or simply load it from the start menu. A dialogue box similar to the one shown right will appear on the screen.

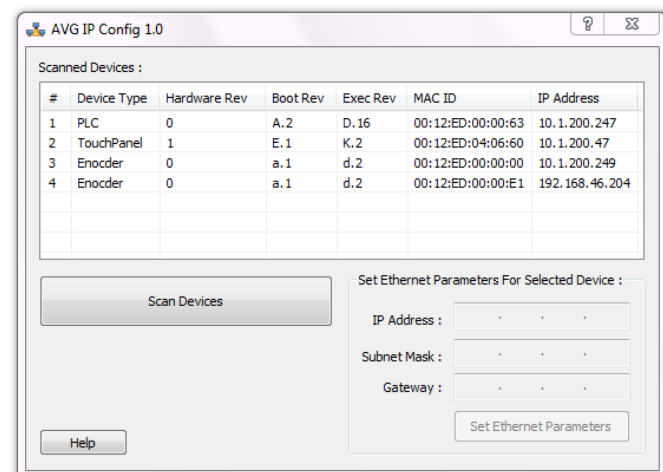


Click 'Scan Devices' to locate available AVG devices on the network. While the utility scans, a dialogue box will appear temporarily.

**Note:** If the computer has multiple networks, the utility will prompt you to choose one. Please select the network connected to the AVG devices.

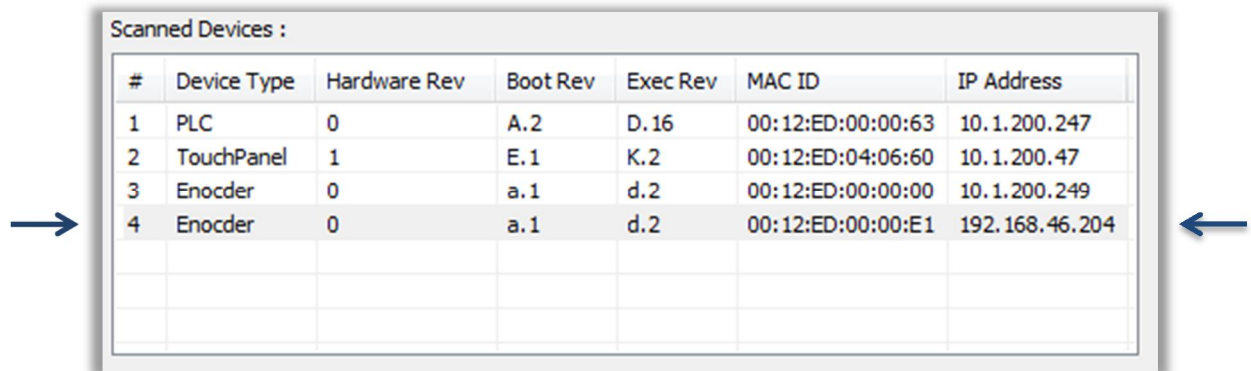


When the utility is finished scanning, a list of AVG devices will populate the field similar to the example shown right.



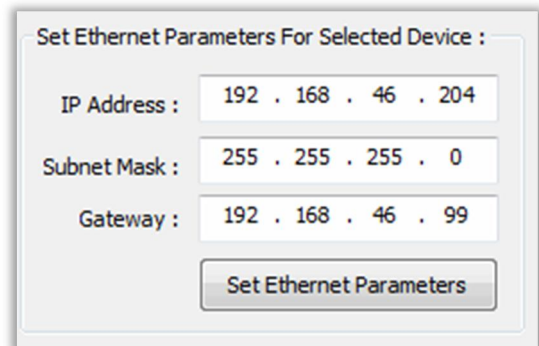


Next, identify the device in the list that you would like to edit. For example, if you know its current IP address, MAC-ID, or it's the only device of its type, use this information to select it from the list.



#	Device Type	Hardware Rev	Boot Rev	Exec Rev	MAC ID	IP Address
1	PLC	0	A.2	D.16	00:12:ED:00:00:63	10.1.200.247
2	TouchPanel	1	E.1	K.2	00:12:ED:04:06:60	10.1.200.47
3	Enocder	0	a.1	d.2	00:12:ED:00:00:00	10.1.200.249
4	Enocder	0	a.1	d.2	00:12:ED:00:00:E1	192.168.46.204

1. Once a device is selected, the current IP address information will then appear in the IP address field. Simply type the necessary changes into the IP Address section.
2. Click 'Set Ethernet Parameters' to save the new values for the device.



Set Ethernet Parameters For Selected Device :

IP Address : 192 . 168 . 46 . 204

Subnet Mask : 255 . 255 . 255 . 0

Gateway : 192 . 168 . 46 . 99

Set Ethernet Parameters

### If you are unable to identify the device in the list:

If you are unable to identify the device you want to edit from the list (because of unknown MAC-ID or unknown IP address, etc.), you will need to create a network where the device of interest can be easily identified.

The easiest method to single out the device in the network would be to connect the target device to the computer using a crossover cable. Some of the AVG devices have auto-crossover functionality and would work with both crossover and a straight Ethernet cable. Once identified, select the device and follow the steps outlined above.



## TROUBLESHOOTING:

### **Issue: #1** AVG IPConfig Utility Did Not Launch

Step #1 Download the AVG IPconfig utility and install it over again. Verify there is adequate space to save the file.

### **Issue #2** Unable to Locate Any Devices

Step #1 Confirm device is running firmware that would support this utility by checking system requirements (page 1).

Step #2 Ensure device is connected to the network.

Step #3 If device is connect to the network, verify selected network matches the network device is listed under.