

# EZSeries 6" Mono Panels

## 6" Monochrome EZSeries - (5.7" STN)

EZSeries's 6" mono panels have a 5.7" diagonal touch screen, with a 320x240 pixel resolution and feature an STN LCD (liquid crystal display) with 16 shades of gray. There are three 6" mono panels to choose from: one with reduced memory/no Ethernet option, one with full 512K memory which accepts Ethernet cards, and the third with DH+/Remote I/O.



### 6" Mono models feature:

- 5.7" diagonal mono STN LCD
- 16 shades of gray
- NEMA 4, 4X (indoor)
- 320x240 pixel resolution
- 200 nits brightness
- 75,000 hour expected bulb half-life
- 1/4" O-ring gasket and eight mounting studs for NEMA 4/4X (indoor)
- 2.3" (59.0mm) installed depth
- Has all EZSeries objects
- Has all 4,000 Library symbols
- Programmed with EZSeries Touchpanel Editor

### EZSeries Touchpanel

| Model Number    | Interface                           | Price | Del. |
|-----------------|-------------------------------------|-------|------|
| <b>EZ-S6M-R</b> | All serial drivers (non-expandable) | \$399 | STK  |

#### Panels with Reduced Memory offer:

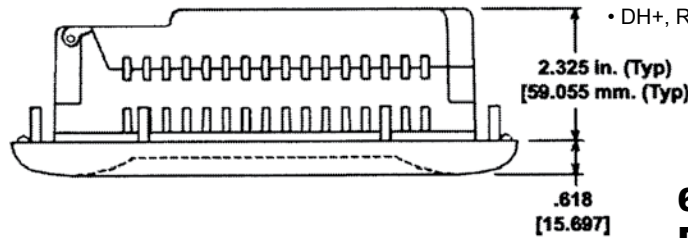
- 256K RAM, not expandable
- No Ethernet or DH+ card support
- 48 touch cells (8x6)

| Model Number     | Interface  | Price | Del. |
|------------------|--|-------|------|
| <b>EZ-S6M-F</b>  | All serial drivers and accepts optional Ethernet cards | \$479 | STK  |
| <b>EZ-S6M-FH</b> | DH+, Remote I/O  | \$979 | 3DAY |

#### Panels with Full Memory offer:

- 512K RAM expandable to 1.5MB
- 512K, 1MB or 2MB option flash card for memory backup
- Ethernet card optional (EZP-ETHERNET)
- Modbus TCP/IP card optional (EZP-ETHERPLUS)
- 48 touch cells (8x6)
- DH+, Remote I/O option

See the different communication interface options available in the charts to the right



### 6" Mono Dimensions

