

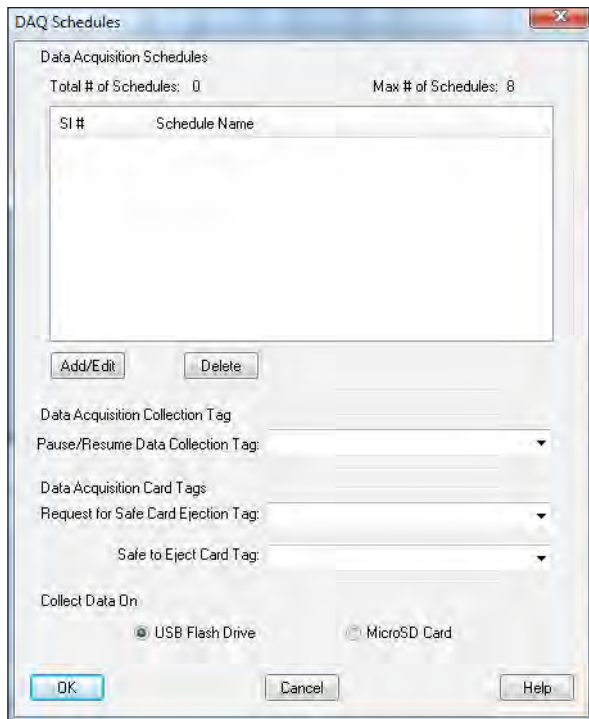
# EZTouch® Alarm and Data Logging Features

**NEW**  
Convenience  
Features

*EZSeries Programming Software is also compatible with the original EZTouch. This enhanced programming software supports all the new PLC drivers as well as new convenience features requested by our customers.*

## Alarm Logging

Now with EZSeries Touchpanel Alarm Logging to USB port is just easy. Select the “Log to File” feature on the New Alarm setup window and save the alarms on the USB flash drive in .csv file format.

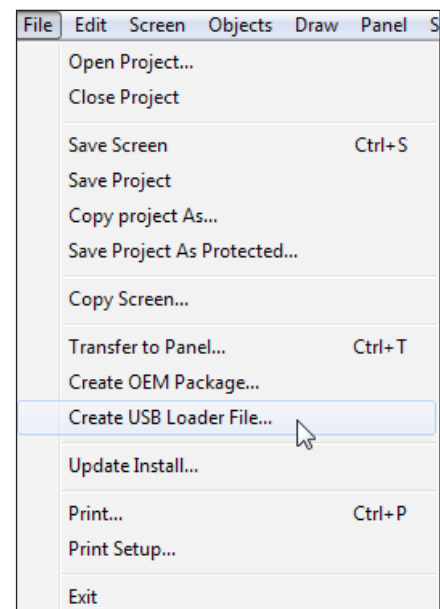


## Data Acquisition on USB Flash Drive or Micro SD Card

EZSeries Touchpanel will schedule your Data Acquisition directly on to the USB flash drive or Micro SD card. This feature helps you collect the data from panel to PC at your convenience.

## USB Program Uploader

This feature helps you save your entire project as a .hmi file which can now be copied on to the USB flash drive. When plugged-in to your EZSeries Touchpanel USB port the panel automatically transfers the program to the panel thus your panel is up and running.



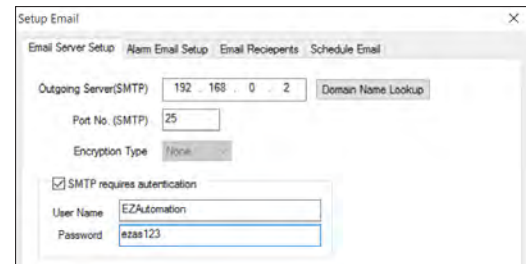
# Email and Text Alarm Messages

Advanced Alarm Management System allows user to program and send emails and text messages to various recipients based on a triggered or scheduled event/alarm .

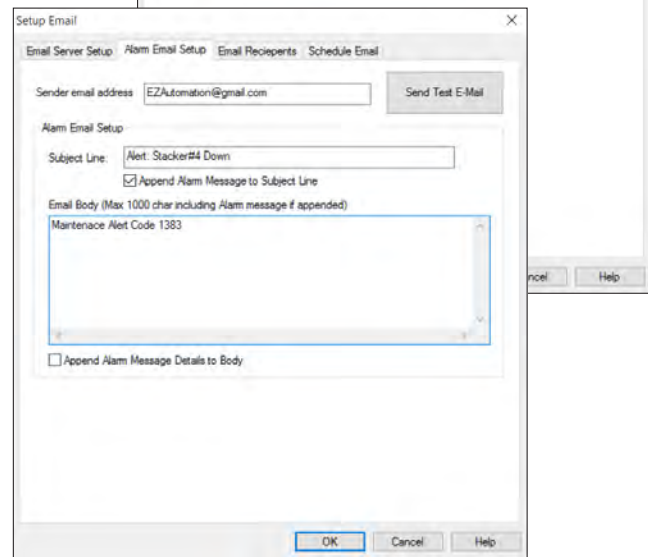
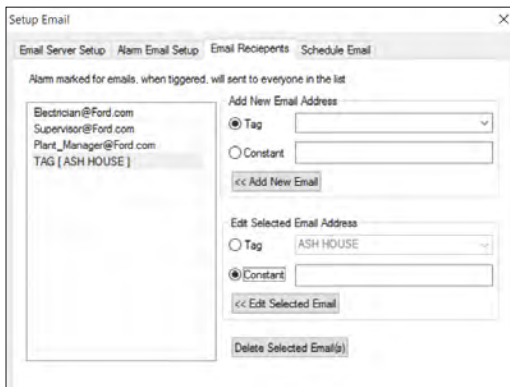
**NEW**  
Convenience  
Features



**1** Email Server Setup  
Program Authenticated  
or Un-authenticated  
Server details



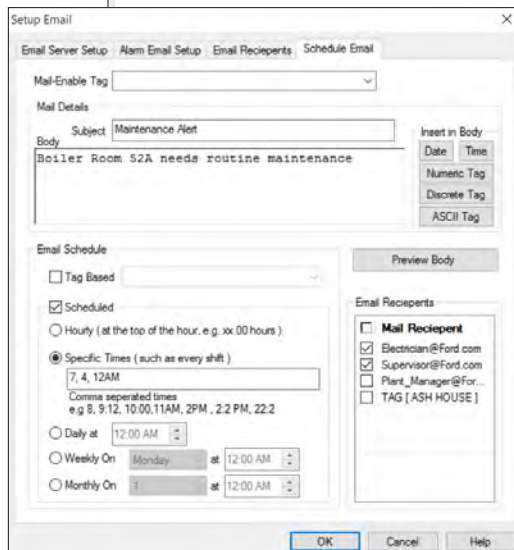
**2** Alarm Email Setup  
Setup Content of Alert for  
Email or Text.

**3** Email Recipients  
Email recipients can be based on an ASCII tag address or a constant email address. The benefit of an ASCII tag address is that a user can modify the email on the HMI and NOT have to go to the programming software. (Useful feature for plant personnel change).

To send text messages, enter in the phone number under email recipient with the cell phone carrier they have.

Example: 630-555-5215@sprintpcs.com



**4** Schedule Email  
Emails Alerts can be programmed based on triggered events / alarms (Tag based), or scheduled timings. Certain messages can be programmed for individual recipients only (i.e. managers), while other messages go out to all plant operators/electricians. Messages can be programmed to specific times such as Shift Changes, Daily, Weekly, or Monthly.



# Remotely Monitor, Control, and Record Data from a Smart Phone or Tablet

EZ RMC™ Remote HMI is an application designed for your mobile devices on both iOS and Android platforms, for the monitoring and control of your EZTouch HMIs from EZAutomation.net. Enjoy direct access to your EZTouch HMI from anywhere at the tip of your fingers, on your phone or tablet. The EZ RMC™ Remote HMI is available on both the iTunes App Store as well as the Google Play store.

This App currently works with EZAutomation's EZTouch EZ3 Series, Windows 7 based EZWindows HMI (10" or 15"), EZTouch Plus Dedicated OS HMIs (15"), or using our runtime EZ-SOFTHMI software running on a compatible PC.



**New Feature!**

Monitor, Control & Record Data in Real-time

App \$4.99

Direct access to your EZTouch HMI is at your finger tips from anywhere in the world. Download the App and start accessing.



## Data View



Monitor Real-Time Data in tabular form.

## Line Graphs



Monitor & Store Real-Time Data via Trend Graphs

## Bar Graphs



Monitor & Compare Real-Time Data over Bar Graphs.



## Remote Access to EZTouch® on iOS and Android Devices

Direct Access to Your EZTouch® HMI is at your fingertips ... from anywhere.

### Features:

- Realtime View and Control of your EZTouch or EZSoft HMI
- "Pinch" style zoom for more in-depth view of your HMI project
- Save screenshots directly from the App
- Multiple user accounts can be configured for each panel project, with multiple levels of security, including either only Viewing ability, or both Viewing and Control
- Record your most used panels in your "Favorites" for quick access, and designate one HMI for direct access by default when the App is opened
- Automatic email and machine productivity and diagnostics.
- Real-time recording of data via bar and line graphs or Excel format.

### Compatibility:

- iOS App works with all iOS devices (iPad, iPhone, iPod Touch) running iOS version 6 or later
- Android App works with devices running OS version 4.0.3 - Ice Cream Sandwich or later

