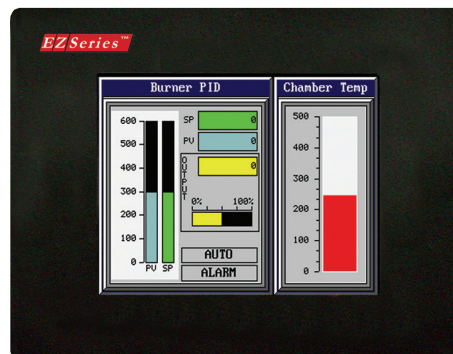


# EZTouch Original 6" TFT Color Panels

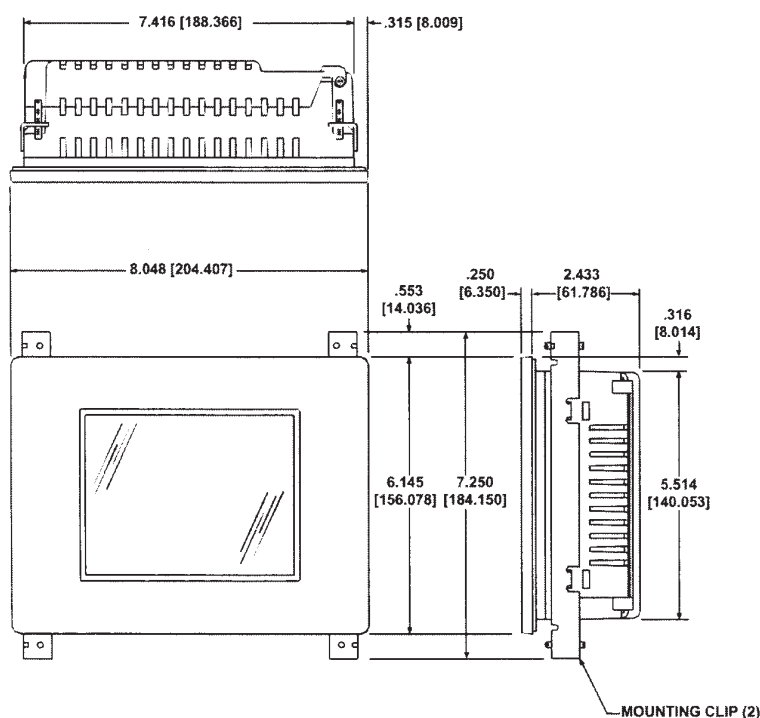
## (Great Replacement for PanelView 550, 600 with DH+/RIO)

### EZTouch Original feature:

- 400 NITs, 75K Hrs @ 55°C
- 320 x 240 screen resolution
- 5.7" diagonal color TFT
- 128 Colors
- Patented HMI on-line edit, No downtime
- Only HMI that can still talk to AB's DH+/RIO, DeviceNet, MB+, Siemens with Profibus and Mitsubishi with CCLink
- Best looking objects and animation.
- On-Screen Recipe Edit.
- Remote Monitoring and Control
- Communicate to all PLCs, including DH+/RIO.
- Dual PLC Drivers with automatic tag conversion.
- Mfr. cost reduction & IP protection for qualified customers.
- Most Rugged 0.090" thick anti-glare touch screen.
- Fastest touch response time of any HMI.
- Unique Visibility tag for best screen space utilization.
- Unicode for multiple languages.
- Easiest Programming Software, design time in hrs not days.
- Full Project simulation on your PC. Custom start-up screen.
- "C level" scripting and logic expressions.
- Most advanced Alarm management and logging.
- Pass-through programming for all PLCs.



Model Number	Interface	Price	Del.
EZ-T6C-FS	All serial drivers and accepts Ethernet and network cards	\$799	STK
EZ-T6C-FSD	DeviceNet	\$1,699	3DAY
EZ-T6C-FSE	AB Ethernet I/P	\$1,499	3DAY
EZ-T6C-FSH	DH+, Remote I/O	\$1,499	3DAY
EZ-T6C-FSM	Modicon MODBUS Plus	\$1,699	3DAY
EZ-T6C-FSP	Profibus	\$1,699	3DAY
EZ-T6C-FST	MODBUS TCP/IP	\$1,699	3DAY
EZ-T6C-FSC	CCLink	\$1,699	3DAY
EZ-T6C-FSU	Universal Ethernet drivers - DF1, I/P, Modbus TCP/IP, SRTP	\$1,398	3DAY
EZ-T6C-RMC	RMC card installed	\$919	3DAY



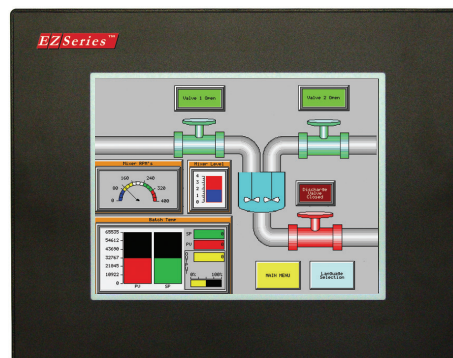
Proudly Made in America

# EZTouch Original 8" TFT Color Panels

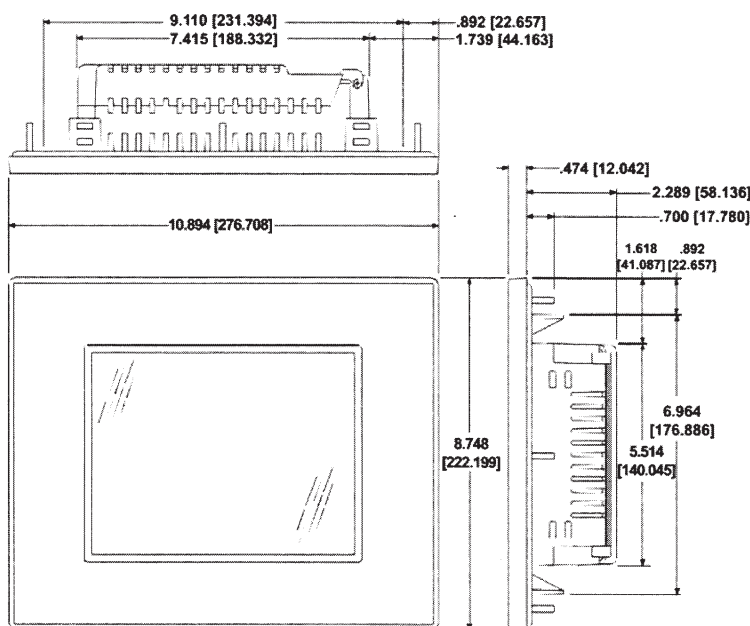
## (Great Replacement for PanelView 700, 900 with DH+/RIO)

### EZTouch Original feature:

- 400 NITs, 75K Hrs @ 55°C
- 800 x 600 screen resolution
- 8.4" diagonal color TFT
- 128 Colors
- Patented HMI on-line edit, No downtime
- Only HMI that can still talk to AB's DH+/RIO, DeviceNet, MB+, Siemens with Profibus and Mitsubishi with CCLink
- Best looking objects and animation.
- On-Screen Recipe Edit.
- Remote Monitoring and Control
- Communicate to all PLCs, including DH+/RIO.
- Dual PLC Drivers with automatic tag conversion.
- Mfr. cost reduction & IP protection for qualified customers.
- Most Rugged 0.090" thick anti-glare touch screen.
- Fastest touch response time of any HMI.
- Unique Visibility tag for best screen space utilization.
- Unicode for multiple languages.
- Easiest Programming Software, design time in hrs not days.
- Full Project simulation on your PC. Custom start-up screen.
- "C level" scripting and logic expressions.
- Most advanced Alarm management and logging.
- Pass-through programming for all PLCs.



Model Number	Interface	Price	Del.
<b>EZ-T8C-F</b>	All serial drivers and accepts Ethernet and network cards	\$1049	STK
<b>EZ-T8C-FD</b>	DeviceNet	\$1,899	3DAY
<b>EZ-T8C-FE</b>	AB Ethernet I/P	\$1,799	3DAY
<b>EZ-T8C-FH</b>	DH+, Remote I/O	\$1,799	3DAY
<b>EZ-T8C-FM</b>	Modicon MODBUS Plus	\$1,899	3DAY
<b>EZ-T8C-FP</b>	Profibus	\$1,899	3DAY
<b>EZ-T8C-FT</b>	MODBUS TCP/IP	\$1,899	3DAY
<b>EZ-T8C-FC</b>	CCLink	\$1,899	3DAY
<b>EZ-T8C-FU</b>	Universal Ethernet drivers - DF1, I/P, Modbus TCP/IP, SRTP	\$1,698	3DAY
<b>EZ-T8C-RMC</b>	RMC card Installed	\$1099	3DAY



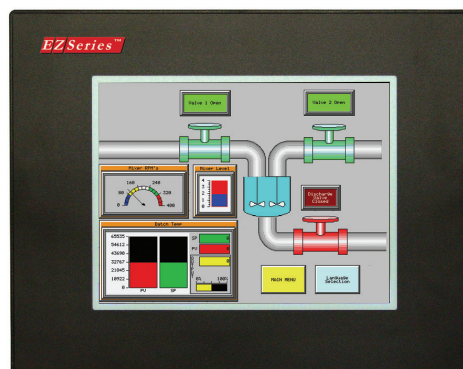
Proudly Made in America

# EZTouch Original 10" TFT Color Panels

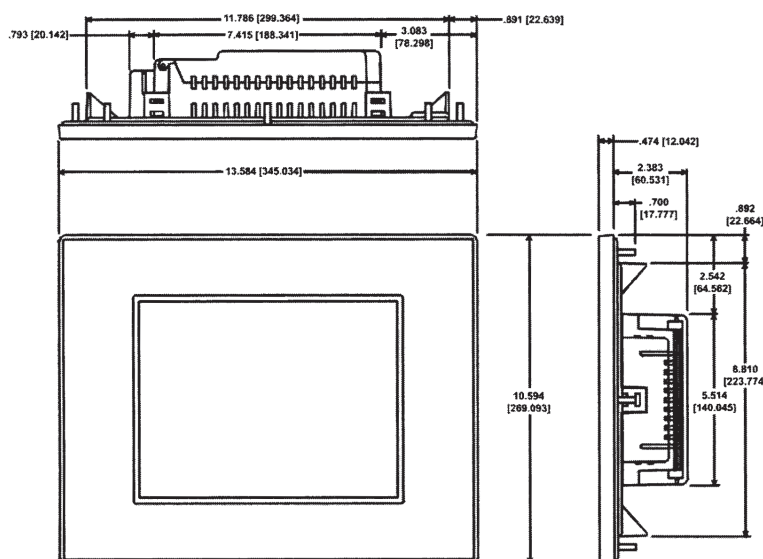
## (Great Replacement for PanelView 1000, 1000E with DH+/RIO)

### EZTouch Original feature:

- 400 NITs, 75K Hrs @ 55°C
- 800 x 600 screen resolution
- 10.4" diagonal color TFT
- 128 Colors
- Patented HMI on-line edit, No downtime
- Only HMI that can still talk to AB's DH+/RIO, DeviceNet, MB+, Siemens with Profibus and Mitsubishi with CCLink
- Best looking objects and animation.
- On-Screen Recipe Edit.
- Remote Monitoring and Control
- Communicate to all PLCs, including DH+/RIO.
- Dual PLC Drivers with automatic tag conversion.
- Mfr. cost reduction & IP protection for qualified customers.
- Most Rugged 0.090" thick anti-glare touch screen.
- Fastest touch response time of any HMI.
- Unique Visibility tag for best screen space utilization.
- Unicode for multiple languages.
- Easiest Programming Software, design time in hrs not days.
- Full Project simulation on your PC. Custom start-up screen.
- "C level" scripting and logic expressions.
- Most advanced Alarm management and logging.
- Pass-through programming for all PLCs.



Model Number	Interface	Price	Del.
<b>EZ-T10C-FS</b> <b>EZ-T10C-F</b>	All serial drivers and accepts optional Ethernet and network cards	\$1,699	STK
<b>EZ-T10C-FSD</b> <b>EZ-T10C-FD</b>	DeviceNet	\$2,499	3DAY
<b>EZ-T10C-FSE</b> <b>EZ-T10C-FE</b>	AB Ethernet I/P	\$2,199	3DAY
<b>EZ-T10C-FSH</b> <b>EZ-T10C-FH</b>	DH+, Remote I/O	\$2,199	3DAY
<b>EZ-T10C-FSM</b> <b>EZ-T10C-FM</b>	Modicon MB+	\$2,499	3DAY
<b>EZ-T10C-FSP</b> <b>EZ-T10C-FP</b>	Profibus	\$2,499	3DAY
<b>EZ-T10C-FST</b> <b>EZ-T10C-FT</b>	MODBUS TCP/IP	\$2,499	3DAY
<b>EZ-T10C-FSC</b> <b>EZ-T10C-FC</b>	CCLink	\$2,499	3DAY
<b>EZ-T10C-FSU</b> <b>EZ-T10C-FU</b>	Universal Ethernet drivers - DF1, I/P, Modbus TCP/IP, SRTP	\$1,998	3DAY
<b>EZ-T10C-RMC</b>	RMC card Installed	\$1649	3DAY



NOTE: Both "F" & "FS" models have same specifications

Proudly Made in America