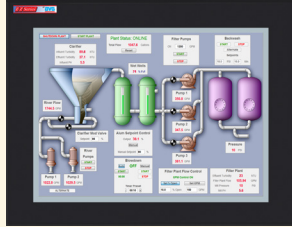


EZTouch Plus Selection Guide & Specifications

EZ Touch Plus 15" Model Specifications

Part Number			
		EZ-T15C-ES	(Full Featured w/Ethernet) \$1799
Specification	15" color slim bezel	Humidity	10-95% RH, noncondensing
Enclosure	NEMA 4, 4X (indoor)	Electrical Noise	NEMA ICS 2-230 showering arc ANSI C37.90a-1974 SWC Level C Chattering Relay Test
Display Type	15.0" TFT w/Built-in Anti-glare	Withstand Voltage	1000VDC (1 minute), between power supply input terminal and protective ground (FG)
Display View Area	12.02"x9.01" (305.28 x 228.96mm)	Insulation Res.	Over 20 MΩ, between power supply input and terminal and protective ground (FG)
Screen Pixels	1024x768	Vibration	5 to 55Hz 2G for 2 hours in the X, Y and Z axes
Colors	16.2M	Shock	10G for under 12ms in the X, Y and Z axes
Brightness/Life	500 nits/75,000 hours	User Memory	16GB SSD, 1GB DDR2 RAM
Touch Screen	Analog Resistive Touch	# of Screens	Up to 999 limited by memory
CPU Type	Intel Atom E640 1GHz with 1GB DDR2 RAM	Real Time Clock	Built into panel (PLC clock is still accessible if available)
Service Power	24VDC (20-30VDC operating range), 1.5A switching supply recommended	Screen Saver	Yes, Backlight off
Power	Back-light On	18 Watts @ 24VDC	Serial and Ethernet Communications
	Back-light Off	9 Watts @ 24VDC	
Agency Approval	UL, CUL, CE		
Operating Temp.	0 to 55°C (32 to 131°F)	USB	4 USB 2.0 Ports (Programming, Datalogging and Peripheral devices)
Storage Temp.	-25 to 65°C (-13 to 149°F)	Micro SD Card Slot	Data Logging
External Dimensions	8.748"x10.894"x2.289" (222.199x276.708x58.136mm)	Weight	7 lbs

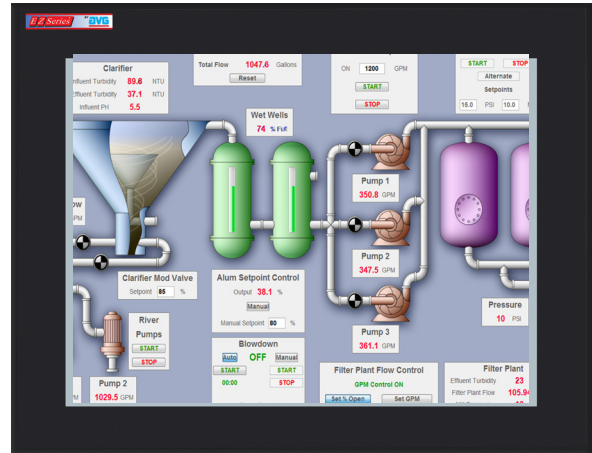
EZTouch Plus 15" TFT Color Panels

15" Color EZTouch Plus

EZTouch Plus 15" panels HMI with both Serial and Ethernet ports and drivers. 4 USB 2.0 ports, including 1 for programming and 1 MicroSD card reader built-in. LED Backlit display with 1024 x 768 resolution.

EZTouch Plus feature:

- 15" LED Backlit display with 16.2 MM Colors
- 500 Nits brightness
- 1024x768 resolution
- 1 GB Ethernet Port for Programming, Webserver access and PLC Communications
- 4 USB 2.0 Ports, including 1 for programming
- MicroSD Card capable
- Intel Atom E640 1 GHz processor
- 1GB DDR RAM
- NEMA 4/4X
- 4 Year Warranty
- 1/4" gasket and four DIN mounting clips for NEMA 4, 4X
- 2.3" (59.0mm) installed depth
- Has all EZSeries objects
- Has all 4,000 Library symbols
- Programmed with EZSeries programming software



Model Number	Interface	Price	Del.
EZ-T15C-ES	All serial and Ethernet drivers	\$1,799	STK
EZ-T15C-EH	Serial, Ethernet and Allen-Bradley's Remote I/O & DH+	\$3,199	STK

