

EZSeries 10" TFT Color Panels

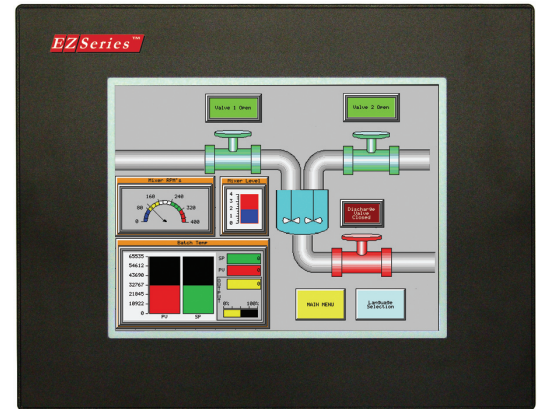
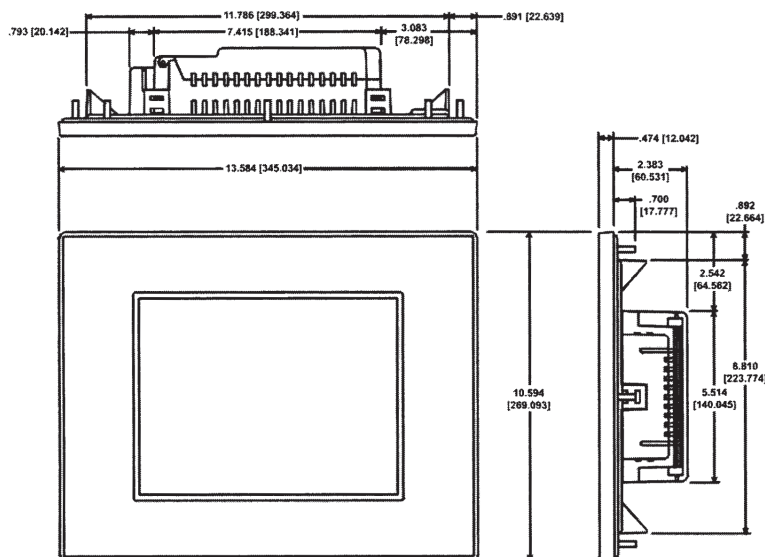
10" Color EZSeries (10.4" TFT)

The 10" color EZSeries panels have a 10.4" diagonal touch screen, with a 640x480 pixel resolution and feature a TFT LCD (liquid crystal display). All models feature a low-profile slim bezel design that provides a small footprint on your enclosure. These panels are available in either NEMA 4, 4X, FDA compliant or NEMA 4, 4X housing. See note below.

EZSeries Touchpanel Features

- 10.4" diagonal color TFT LCD
- Low-profile slim bezel design
- 128 colors
- 640x480 pixel resolution
- 512K RAM expandable to 1.5MB
- 512K, 1MB or 2MB option flash card for memory backup
- Ethernet card optional (EZP-ETHERNET)
- MODBUS TCP/IP card optional (EZP-ETHERPLUS)
- 400 nits brightness
- 50,000 hour expected bulb half-life
- 192 touch cells (16x12)
- 1/4" gasket and four DIN mounting clips for NEMA 4, 4X
- 1/4" O-ring gasket and eight mounting studs for NEMA 4, 4X (indoor)
- 2.38" (60.53mm) installed depth
- Has all EZSeries objects
- Has all 4,000 Library symbols
- Programmed with EZSeries Programming Software

See the different communication interface options available in the chart to the right.



EZSeries Touchpanel

Model Number	Interface	Price	Del.
EZ-T10C-FS EZ-T10C-F	All serial drivers and accepts optional Ethernet and network cards	\$1,699	STK
EZ-T10C-FSD EZ-T10C-FD	DeviceNet	\$2,499	3DAY
EZ-T10C-FSE EZ-T10C-FE	AB Ethernet I/P	\$2,199	3DAY
EZ-T10C-FSH EZ-T10C-FH	DH+, Remote I/O	\$2,199	3DAY
EZ-T10C-FSM EZ-T10C-FM	Modicon MB+	\$2,499	3DAY
EZ-T10C-FSP EZ-T10C-FP	Profibus	\$2,499	3DAY
EZ-T10C-FST EZ-T10C-FT	MODBUS TCP/IP	\$2,499	3DAY
EZ-T10C-FSC EZ-T10C-FC	CCLink	\$2,499	3DAY
EZ-T10C-FSU EZ-T10C-FU	Universal Ethernet drivers - DF1, I/P, Modbus TCP/IP, SRTP	\$1,998	3DAY
EZ-T10C-RMC	RMC card Installed	\$1649	3DAY

NOTE: Both "F" & "FS" models have same specifications