


# EZ RMC Remote HMI App Application Guide for iOS

---

The EZ RMC Remote HMI App is an application designed for your iOS devices to enable the monitoring and control of your EZTouch HMIs from EZAutomation.net. This App allows direct and full access to your EZTouch HMI from anywhere in the world, right at the tips of your fingers on your phone or tablet!

The EZ RMC Remote HMI App currently works with EZAutomation's Windows based CE Series HMIs (6" to 10"), Windows 7 Based EZWindows HMI (10" or 15"), EZ3 units, EZTouch Plus Dedicated OS HMIs (15"), or using EZAutomation's runtime EZ-SOFTHMI software on a compatible PC. Support for other platforms is under development, and updates will be made available soon.

## Safety Considerations

	<p><b>Safety Notice:</b> <i>As the EZ RMC Remote HMI App allows users to have full monitoring and control capabilities of their HMI through a mobile device, use of the App may interfere with the functionality of the HMI and contradict local operator input. All proper control, security, networking and safety procedures should be considered and implemented when using this Remote Monitoring and Control (RMC) feature.</i></p>
---	---

## Panel Requirements

The EZTouch HMI will need to be programmed with EZ-Series Programming Software Version 6.2 or later, and the HMIs will need the following minimum firmware requirements:

EZTouch HMI Type	Firmware Version
EZ-CE Series HMI	I.12 or later
EZWindows HMI	I.12 or later
EZTouchPlus	K.5.80 or later
EZ3	K.5.80 or later
EZ-SOFTHMI	I.12 or later

# Application Guide

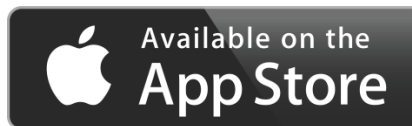
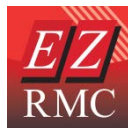


## Downloading the App.

The EZ RMC Remote HMI App can be downloaded from the iTunes App Store to any iPhone, iPad or iPod Touch devices running iOS version 6.0 or later.

The App can be found in the iTunes App store by searching for “EZ RMC” or by following this link:

<https://itunes.apple.com/au/app/ez-rmc/id835726465?mt=8&ign-mpt=uo%3D2>



## Connectivity to EZTouch HMIs

In order to ensure full access to your EZTouch HMI from the EZ RMC App, verify that you are using the right model of HMIs (EZ-CE Series, EZWindows HMI, EZTouch Plus, EZ3 or EZ-SoftHMI), and that the panel meets with the necessary firmware requirements. Also check that the HMI is configured with the same IP Network settings as what the mobile device is active on, or that the HMI is accessible via a Public IP address on the internet.

Finally, the HMI will need to be set up for Remote Access and for the users that will have either only View capabilities, or both View and full Control.

## App Features

1. Real-time View and Control of your EZTouch HMI panel.
2. “Pinch” style zoom for more in-depth view of you HMI project.
3. Save screenshots directly from the App.
4. Multiple user accounts can be configured for each panel project, with multiple levels of security including Viewing ability only or both Viewing and Control.
5. Record your most used panels in your Favorites for quick access.
6. Designate one HMI for direct access by default when the App is opened.
7. View Data-logged files from a listed panel as a spreadsheet or in graph form.
8. Able to refresh logged data to view the most recent information.

# Application Guide

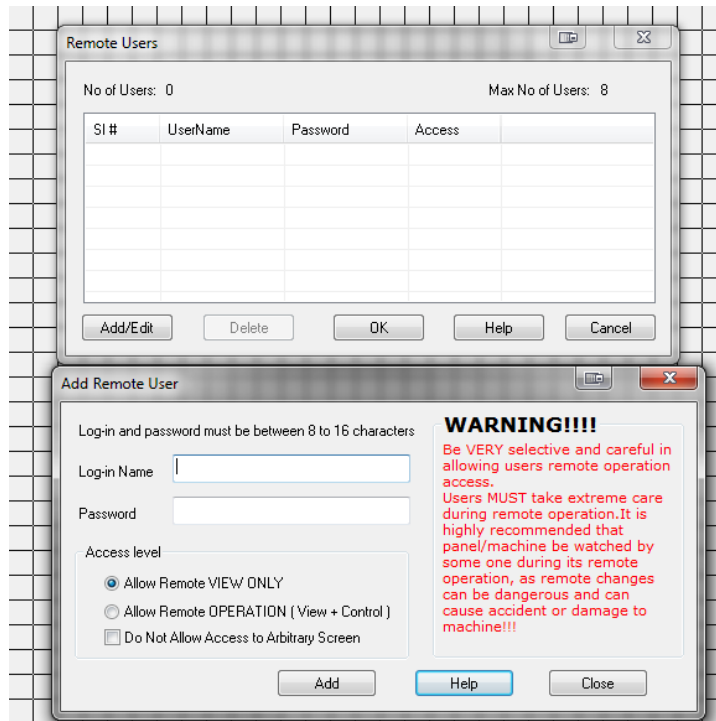


## Network Security Concerns

### Remote Monitoring and Control User Accounts

Before utilizing the EZ RMC App, you will need to set up User Access accounts in the programming software for the panels. The user account will need to be set up for Remote View Only or Remote Operation (View and Control).

To add remote uses, click on Remote Access > Remote Users menu item and click on Add/Edit button.



### Firewall and VPN Settings

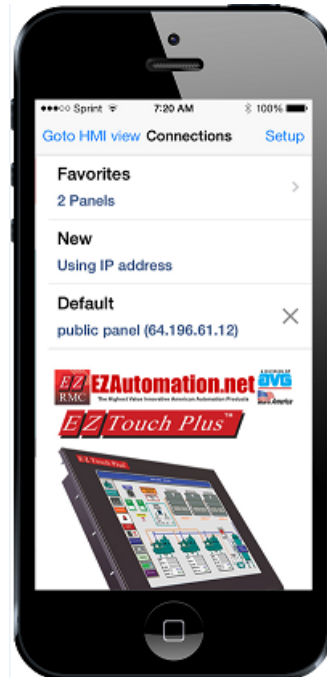
For external access to the EZTouch HMI via the internet, it is important to consider a Firewall for security purposes. The password protection provided by EZAutomation on its Remote Monitoring and Control software is extremely secure, but it is recommended that an additional firewall be installed. Similarly, a highly encrypted and secure VPN connection is recommended for an Enterprise network or accessibility over the internet. Please consult with your IT department or call our Technical Support department for any further questions regarding network security.

# Application Guide



## Using the EZ RMC Remote HMI App

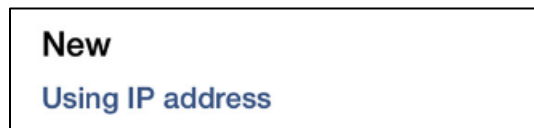
Ensure your iOS mobile device is connected to the internet via either cellular or WiFi connection, and your HMI is set up for Remote Monitoring and Control. When you launch the App, there will be a brief appearance of the launch image followed by the Connections screen shown below:



From this screen, you could select a panel to connect to. You can select a panel already saved in the Favorites list, connect with the Default panel, whose name and IP is given as Default, or add a New Panel by providing its IP Address.

### To Connect to a New Panel

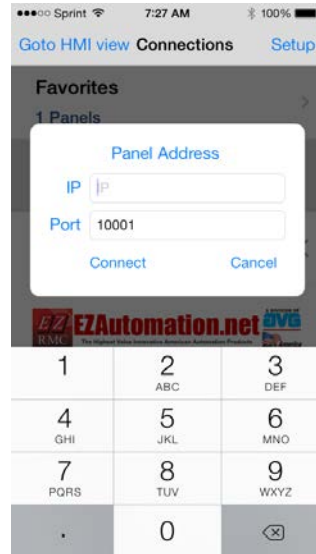
1. Tap *New – Using IP Address* on the Connections screen.



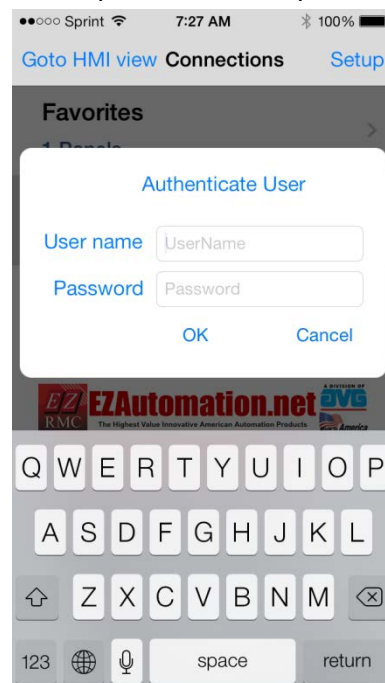
2. A window will appear asking for the Panel Address. Enter the IP address that the panel is located on. The HMI connects on port 10001. The dialogue box therefore shows default port as 10001. Then select *Connect*.

**NOTE:** If you are using port forwarding, you could use a different port number here, but your router should forward that port number to 10001 to connect to the panel.

# Application Guide

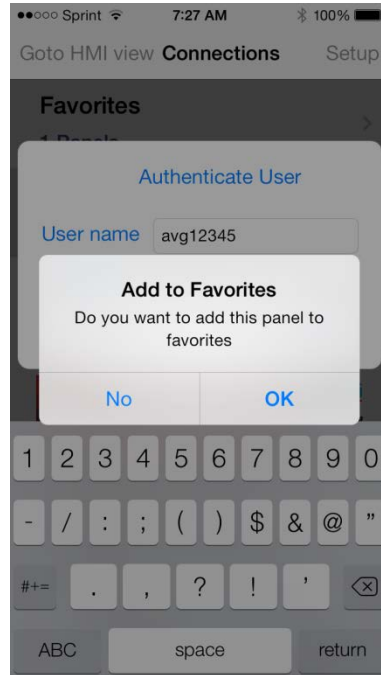


3. App will prompt you for your User name and password. These are the credentials programmed within the panel as remote users. Enter your User name and password then press *OK*.

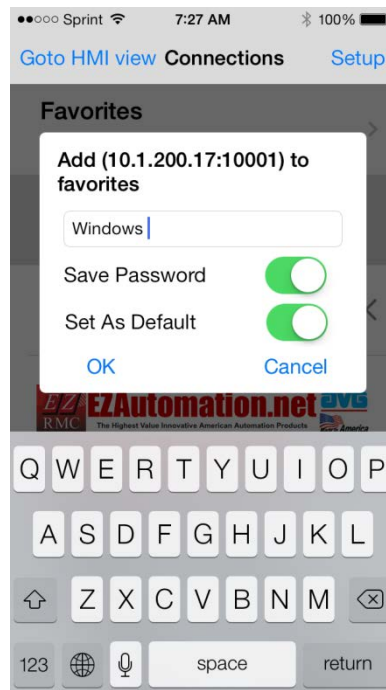


4. The App will then prompt you if you want to add the Panel to your Favorites list. Once a panel is listed on Favorites, you will not need to reenter the panel's IP Address. Additionally, you can choose whether to require a user to reenter a user name and password to connect to the panel. Select *OK* to add the panel to your favorites. Select *No* to cancel.

# Application Guide



5. After selecting to add a panel to your favorites, you will be prompted to enter a name for the panel. Enter a label of your choosing. Also on this screen, you will have the option to save a password for accessing the panel or set the HMI as the default panel with the App using the slider. When finished press *OK*.

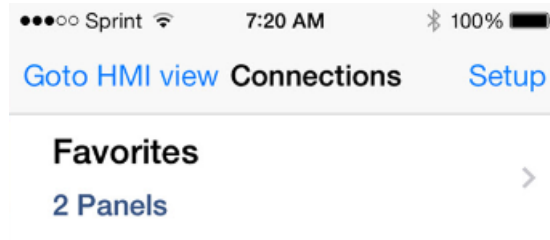


# Application Guide

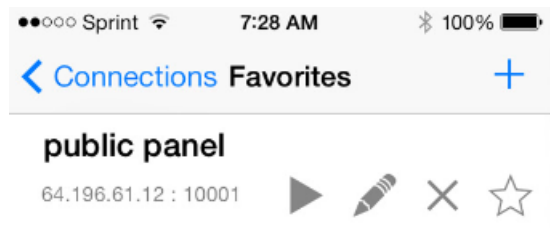


*Alternatively*, you may connect to a panel by adding the panel under the Favorites listing.

1. Select Favorites from the Connections screen.



2. Press the crossbar in the upper right corner of the screen.



3. A new screen will prompt you to enter the Panel information including: IP Address, panel name, and user name verification. Also, you may select the panel as the default panel associated with the App or require a password to access it. Then press *Save*.

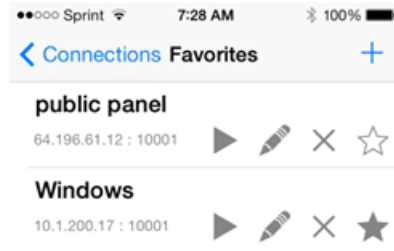


# Application Guide









## To Connect to a Panel from Favorites List

On Welcome Screen, tap *Favorites*. A list of panels on your Favorites will load. (Example shown below.)

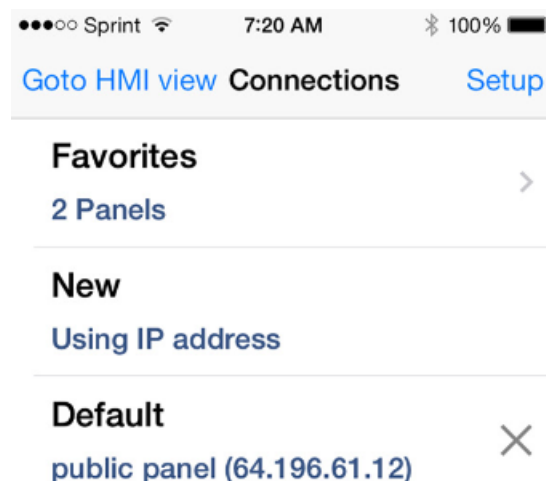


The icons next to the panel IP Address have the following functions:

-  Press to connect to the Panel and view currently displayed screen on the Panel
-  Press to edit information about the panel
-  Press to delete a panel from the Favorites list (**Note:** no confirm is asked)
-  Press to select a panel as the default panel associated with the App
-  Press to add a new panel to the Favorites list
-  Press to return to the Connections screen

## To Connect to the Default Panel

To connect to the Default Panel, simply tap at the default panel from the Connections screen. You may be prompted for credentials (user name and password) if those were not saved.



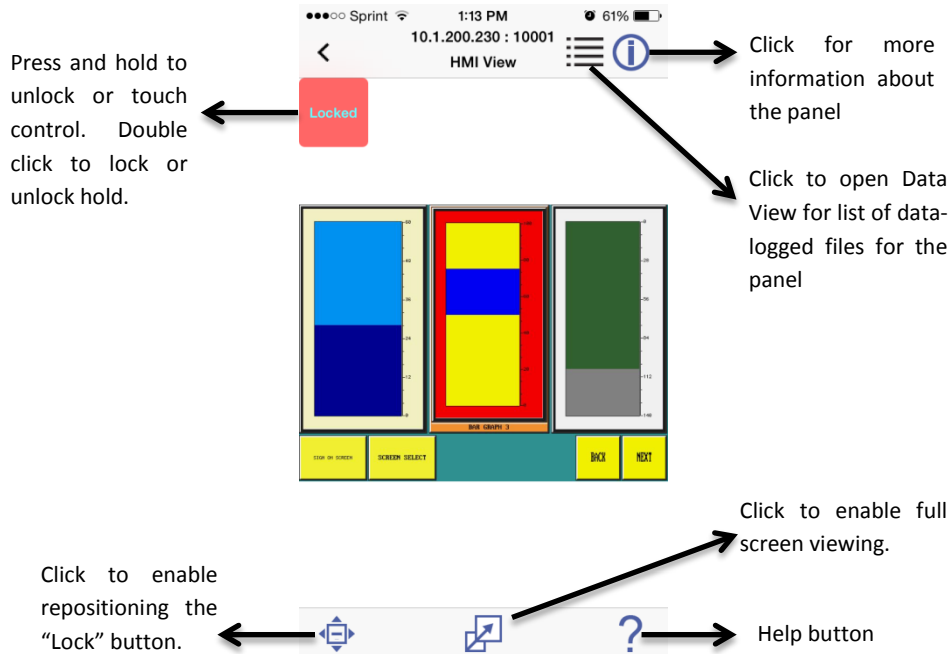


# Application Guide



## Real-time View and Control

The EZ RMC Remote HMI App enables the monitoring and control of your EZTouch HMIs in real time. Simply select the panel you wish to view from the Connections screen (New Panel, Default, or Favorites). Once connected, the device will show the screen currently displayed on the panel. In addition, the device shows a Red button labeled *Locked* and a few other controls. The function of these controls is shown below:



## Functions of Locked Button

For users with control permission, the *Locked* button prevents unintentional touches to touch objects. The touch objects on the panel will NOT respond to touch while the button shows *Locked* state. The touch objects will only respond to touches when the button shows *Unlocked* state and green color. To unlock, simultaneous press the *Locked* button and object for touch action.

Alternatively, you can latch the button in *Unlocked* state by double tapping the *Locked* icon. The button will then say *Unlocked* and be green in color. To reverse, double tap it again.

**WE HIGHLY RECOMMEND NOT TO LEAVE THE BUTTON IN UNLOCKED STATE. UNINTENTIONAL TOUCHES MAY CREATE MACHINE AND PERSONNEL SAFETY ISSUES.**

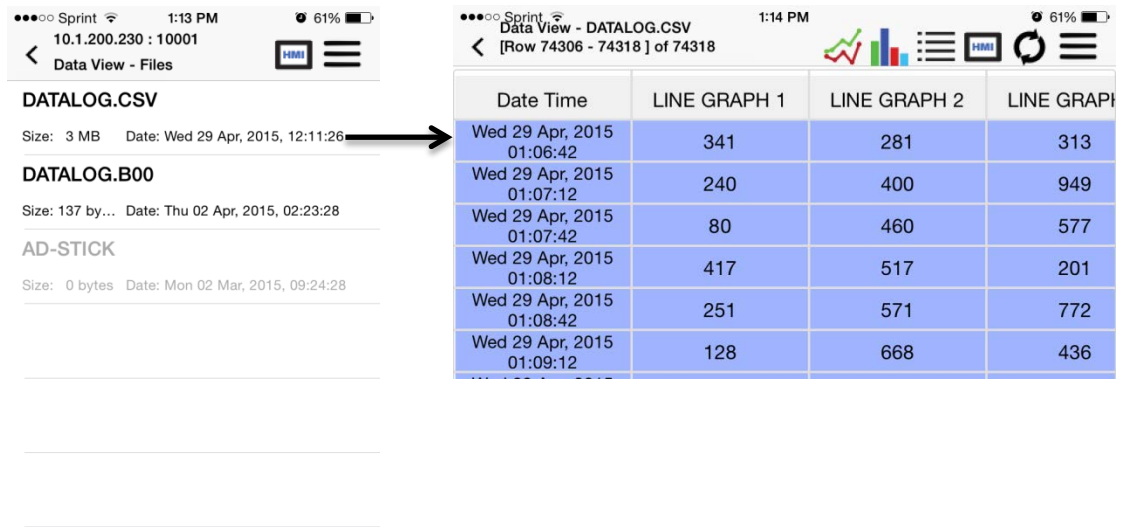
# Application Guide



## Data View Screen Options

After opening the Data View files, the user can select a data-logging file for closer examination by tapping on the target file. In addition, the collected data can easily be displayed as a list or in graph form. Tapping the target file will load the information in list form. Use the icons, or the menu bar, to display the information in graph form or to return to an earlier screen.

**NOTE:** On the iPhone, some icons will only display when viewing data in landscape mode.



The icons listed in the Data View mode have the following functions:

**Note:** Depending on Mode selected, not all options will display.



Press to display information as a bar graph



Press to display information as a line graph



Press to display information as a spreadsheet



Press to return to main Data View and select a data-logging file



Press to return to HMI view



Press to refresh the data with the latest information



Press to open the Menu