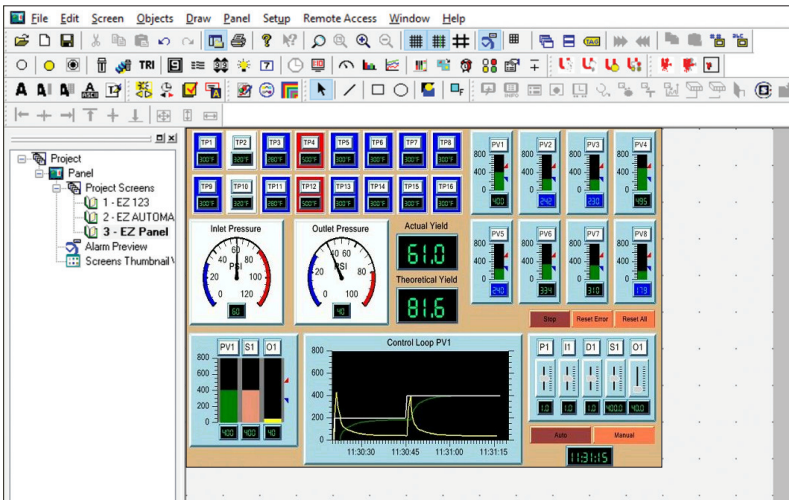


EZ Soft HMI Runtime & Development

Runtime Scalable to any PC Monitor Size & Resolution
Runs on Windows 7 and Windows 10



EZSoftHMI features:

- Scalable to any size monitor
- The lowest cost easy to use Soft HMI that runs on any Panel PC, single user license \$599
- Patented HMI on-line edit, No downtime
- EZSoft HMIs in a plant or multiple of plants have the capacity to be monitored using EZPlantview software.
- Best looking objects and animation with 65K colors.
- Unicode for multiple languages.
- Easiest Programming Software, design time in hrs not days.
- Full Project simulation on your PC.
- "C level" scripting and logic expressions.
- Data-logging, Recipes, Emails, USBs. Free Chart recorder.
- Most advanced Alarm management and logging.
- On-Screen Recipe Edit.
- Remote Monitoring and Control, Smart phones & Ethernet.
- Communicate to all PLCs, including Serial & Ethernet drivers.
- Dual PLC Drivers with automatic tag conversion.
- Unique Visibility tag for best screen space utilization.
- Pass-through programming for all PLCs.

Screen Development Software Only \$149

Use your existing EZ Program with no conversion needed!

EZ SoftHMI Drivers	
Allen Bradley / Rockwell Automation	
<ul style="list-style-type: none"> • A-B DF1 Half and Full Duplex (PLC-5, SLC500, Micrologix 1000, 1200 and 1500) • DH485 AIC/AIC+ for Micrologix 1000, 1200,1400, 1500,SLC 500, 5/01, 5/02, 5/03) • A-B Micrologix 800 CIP Protocol • A-B Ethernet I/P (MicroLogix 800, Control & Compact Logix) • A-B DF1 over Ethernet (for Micrologix & SLC 500 PLCs) 	
Automation Direct	
<ul style="list-style-type: none"> • ADC K-Sequence (Direct Logic PLCs) • Do-More PLC (Serial & Ethernet) • Modbus (Productivity 3000 PACs, Direct Logic PLCs, Click PLCs) • ECOM Ethernet (Direct Logic PLCs) • Entity Think&Do (Modbus RTU and Modbus TCP/IP) • Productivity Driver (Serial & Ethernet) 	
AVG / EZAutomation	
<ul style="list-style-type: none"> • EZ Ethernet • EtherNet/IP • EZRack PLC TCP/IP 	
General Electric	
<ul style="list-style-type: none"> • GE SRTP over Ethernet 	
Mitsubishi	
<ul style="list-style-type: none"> • Modbus TCP/IP 	
Modicon / Schneider	
<ul style="list-style-type: none"> • Modbus RTU • Modbus TCP/IP 	
Omron	
<ul style="list-style-type: none"> • Modbus TCP/IP 	
Siemens	
<ul style="list-style-type: none"> • Siemens Ethernet ISO over TCP/IP • S7-200, S7-300, S7-400, S7-1200 & S7-1500 series 	



Part #:
EZ-SOFTHMI
\$599