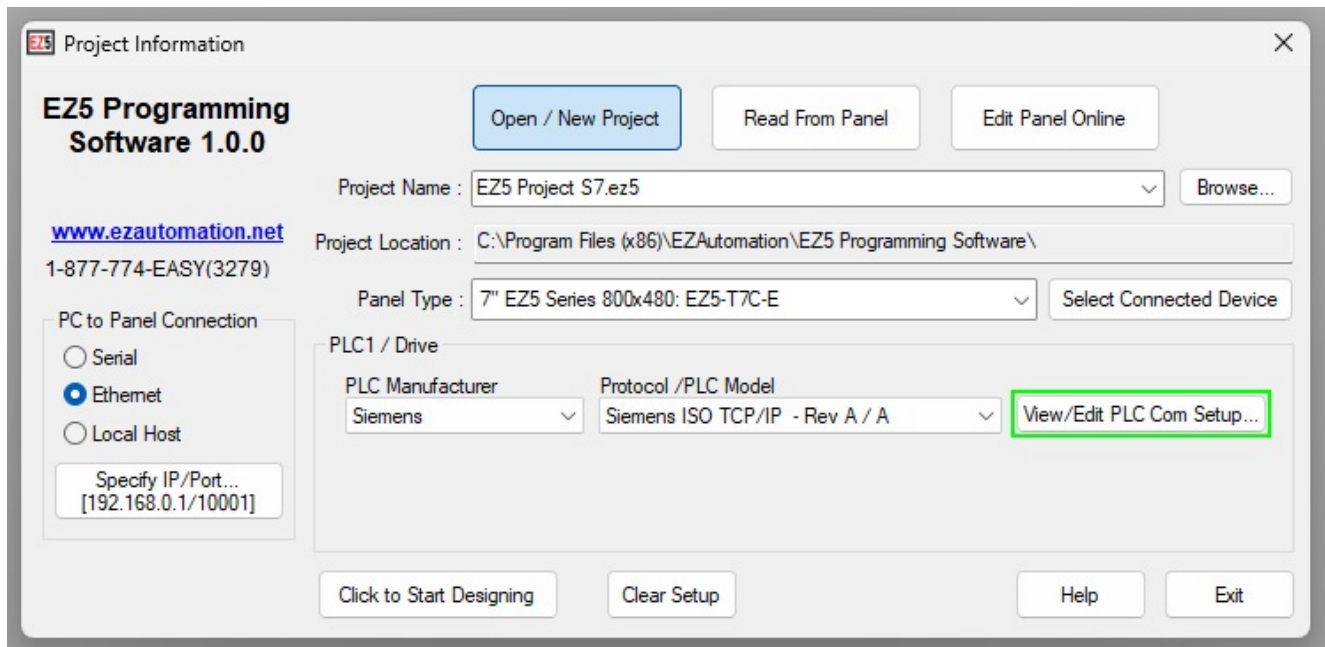


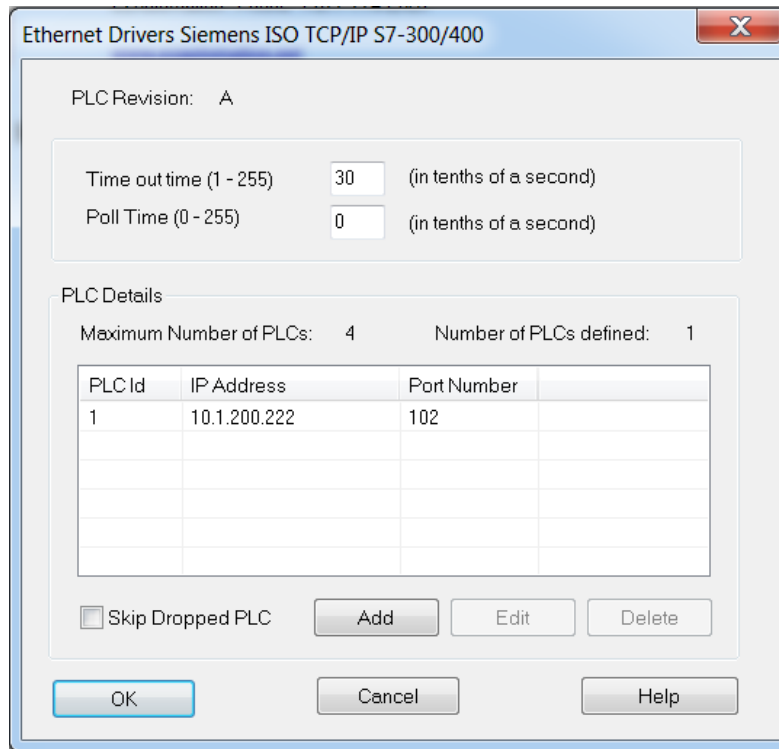
Configuring EZ5 Touch Panel to Siemens S7 Series PLC

This guide will walk you through the setup to connect a Siemens PLC and an Touch panel using ISO over Ethernet protocol.

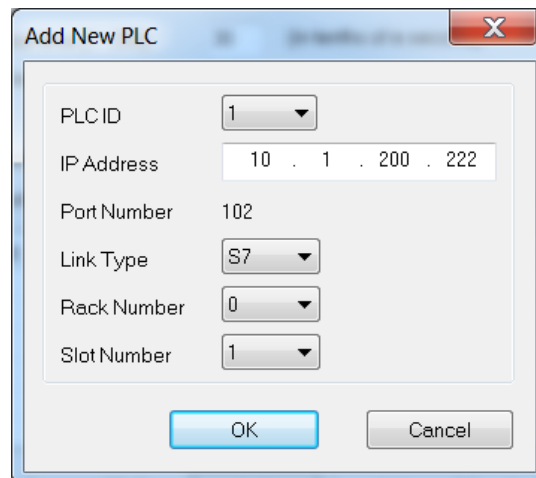
1. Launch EZSeries Panel Edit 6.2.
2. In the Project Information screen, select the first option on the left “Edit Program OFF-LINE”



3. Give it a project name and click on “OK”. Other fields will be highlighted.
4. Select “EZ5 Series” under the panel family and choose the size of the panel.
5. Under the PLC select “Ethernet Drivers”. Then under PLC Model and Protocol select “Siemens ISO TCP/IP S7 300/400”. (Note: While it does say S7 300/400 it also works with S7 1200 and S7 1500 models.)
6. Next click on View/Edit PLC Com Setup.



7. In the dialogue box that appears click on the Add button to add the PLC IP address that you are communicating with.



8. The Add New PLC dialogue box will appear. Keep the PLC ID as "1" and then enter the IP Address in its field, for example "10.1.200.222".
9. Next choose S7 for the Link Type. Choose the Rack Number based on what the PLC believes its rack number is.
10. Finally choose the slot number where the CPU is located. This is usually slot number "1" but does not have to be.
11. Click OK three times to start programming your project. You should now be configured to communicate to the Siemens PLC.