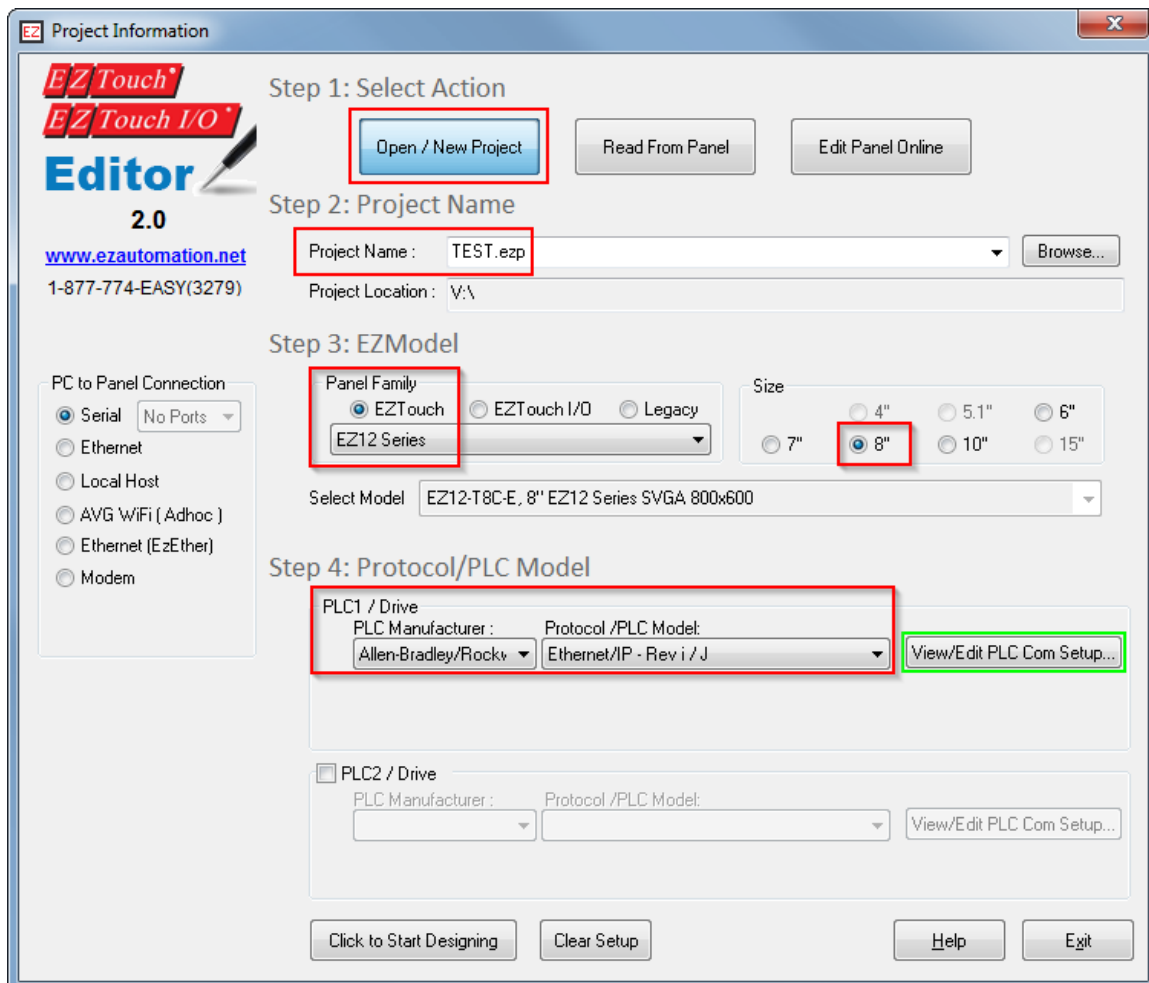
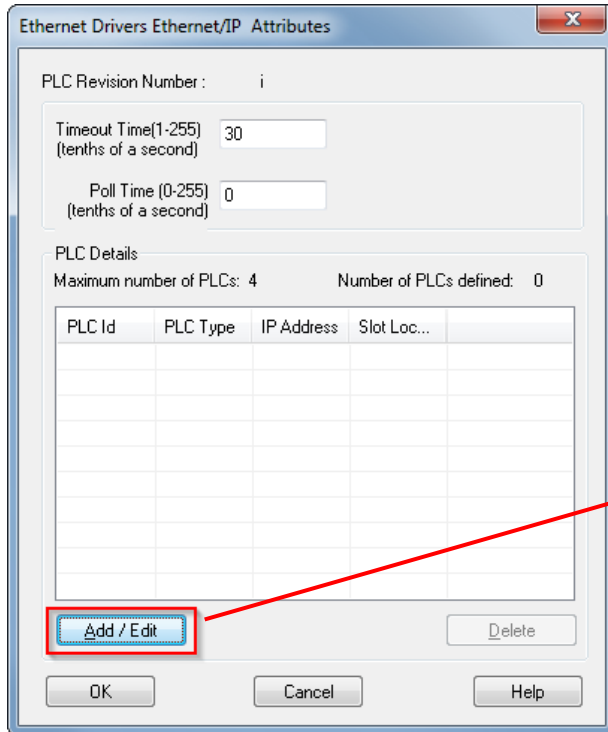


PLCs supported: ControlLogix, CompactLogix, SLC, Micrologix, PLC5 and Micro800 series

1. Launch the EZTouch Editor.
2. Click on “Open / New Project” and type in a project name and click the “Enter” key on your keyboard.
3. Under “Panel Family” select “EZTouch” and click on the drop down menu and select “EZ12 Series”.
4. Select the size of the EZTouch panel.
5. Under “PLC1 / Drive” drop down, select “Allen-Bradley / Rockwell Automation”.
6. Select “Ethernet/IP” under “Protocol/PLC Model”

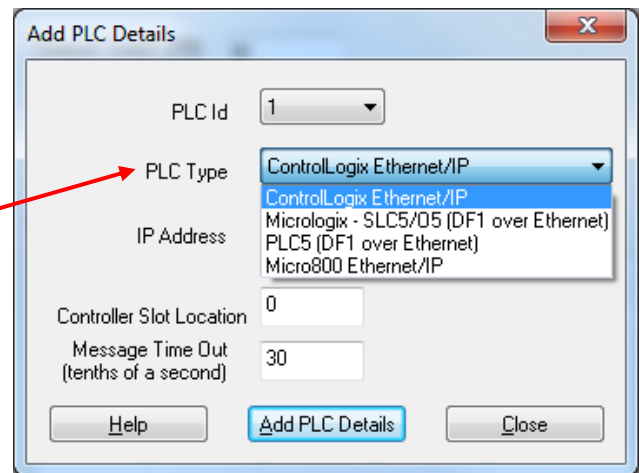


7. Click on “View/Edit PLC Com Setup”



Select the PLC type:

- ControlLogix / CompactLogix
- MicroLogix / SLC
- PLC5
- Micro800 Series



8. Type in the IP address of the PLC. If you do not remember the IP address, please type in any random numbers, and you can change it later. Click on “Add PLC Details” and “Close”

9. Click on “OK” on the next window and “Click to Start Designing” to start designing your project.

