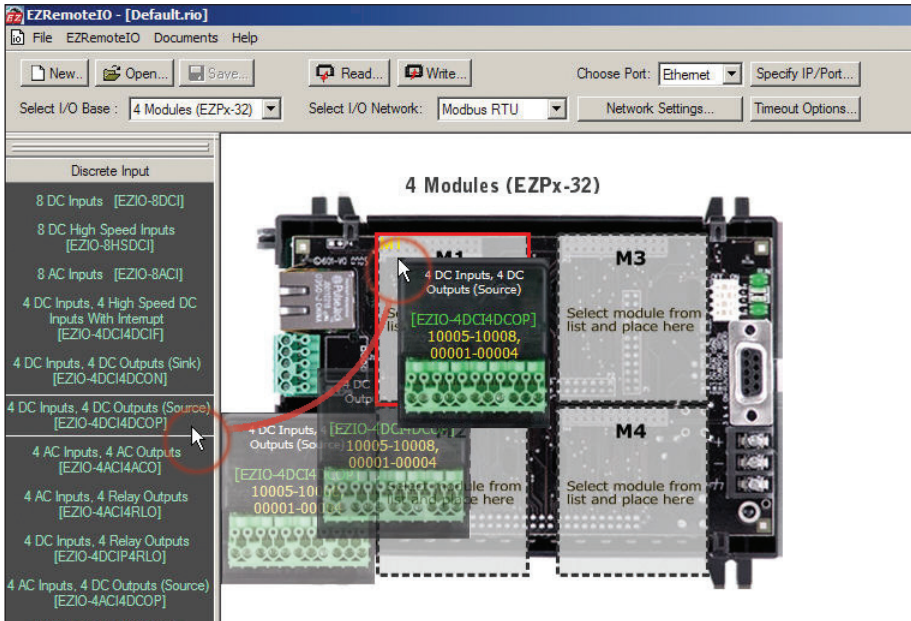


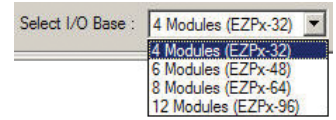
# EZ Remote I/O® EZiest to configure, Drag-n-Drop, Automatic Address Assignment

For Video Demonstration log onto:  
[http://www.ezautomation.net/videos/ezio/ezio\\_video\\_gallery.html](http://www.ezautomation.net/videos/ezio/ezio_video_gallery.html)



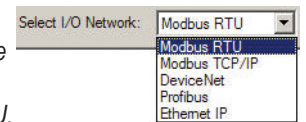
## 1 Select the I/O Base

Choose the 4 types of I/O base for your I/O modules



## 2 Select the I/O Network

Choose the Network type Ethernet I/P, Modbus RTU, Modbus TCP/IP, DeviceNet, Profibus

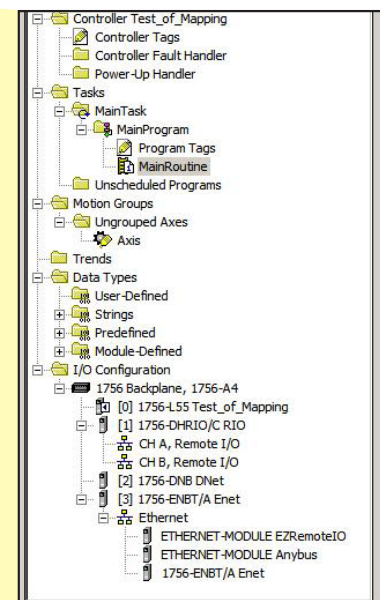
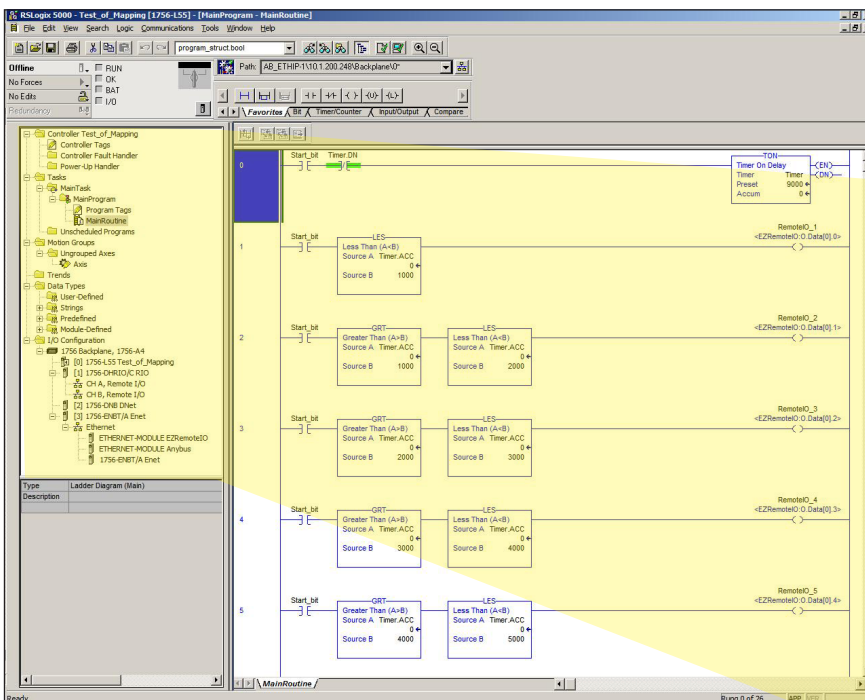


## 3 Drag-n-Drop I/O Modules

Pick the I/O modules and Drop it on the I/O base, software automatically assigns all the nodes

## 4 Add Module to your RS Logix PLC Software

For example in RS Logix 5000 you add on Ethernet node in your tree diagram



EZ Remote I/O