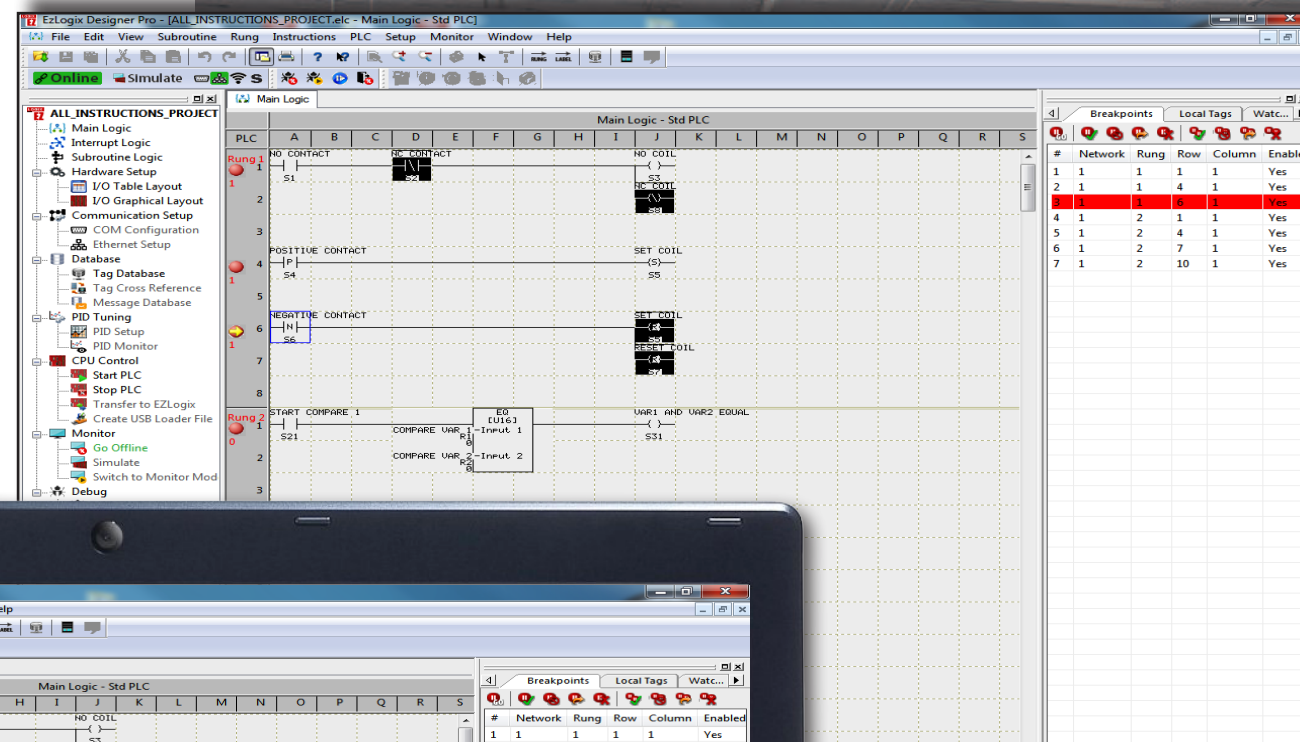


EZRackPLC™ Break-Point / Single Step Debugging

EZRack PLC Designer Pro's Break Point feature is an excellent debugging function to troubleshoot programming errors. Break points can be set at certain positions in the program in order to force an execution stop. At each stop, respective variable values can be examined. Only the tasks that reached the break point are stopped while all other tasks continue to run. The break point feature is ideal for troubleshooting large ladder logic programs that do not have syntax errors but are not performing in the manner intended. It provides the programmer a step-by-step execution of variables in order to see where the potential bugs are in the ladder logic code.



Single Step Debugging
Takes you step-by-step to debug the rung from the start of your break-point

